

# LUKAS 640

LWIR 640 x 512 15 $\mu$ m

## Description

LUKAS 640 is a T2SL LWIR detector which shows an excellent performance especially for ground vehicles with its anti-blooming capability and strong penetration in foggy & dusty area. This LWIR detector ensures the visibility even in tough environmental conditions such as sun-glint and light reflex.

## Applications



Security /  
Surveillance



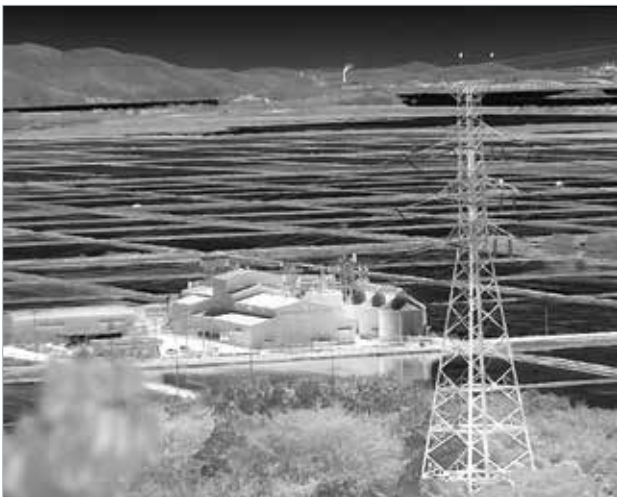
Night  
Observation



Thermal  
Sight



## Images from the 2D IR detector



# SEE THE NEW WORLD THROUGH i3system, Inc.

## Specifications

Array format	640 x 512
Pixel pitch	15 $\mu$ m
Detector type	T2SL
Wavelength band	LWIR (7.7 $\mu$ m ~ 9.4 $\mu$ m)
No. of output channel	4 channels
Operability	$\geq 99.5\%$
NETD	$\leq 25$ mK@ 50% Wellfill, 60Hz
Frame rate	up to 180Hz @ 640 x 512 Full Frame
Dimension	72mm x 56mm x 142mm
Cooldown time	$\leq 7$ min
Environmental condition	MIL-STD-810
Operating temperature	-40~+71 $^{\circ}$ C
FPA Temperature	80K

## Dimension

