

InSb Cooled IR Engine Gen 2

InSb 640 x 512 15 μ m Detector/Engine

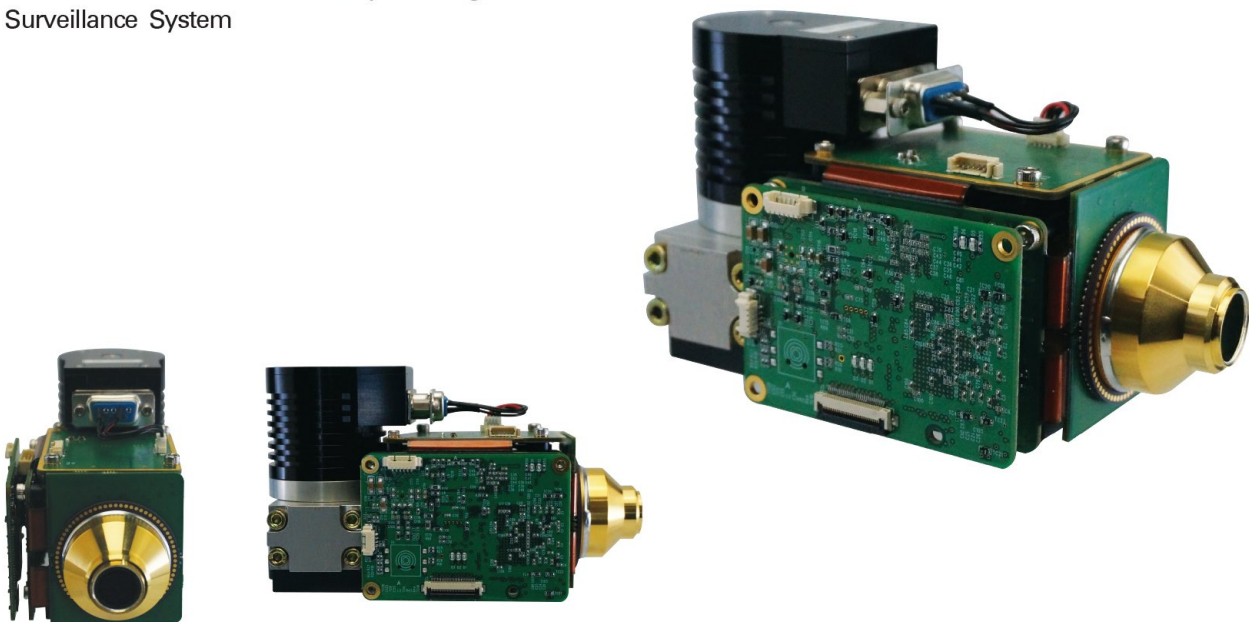
iCE640

Array Features

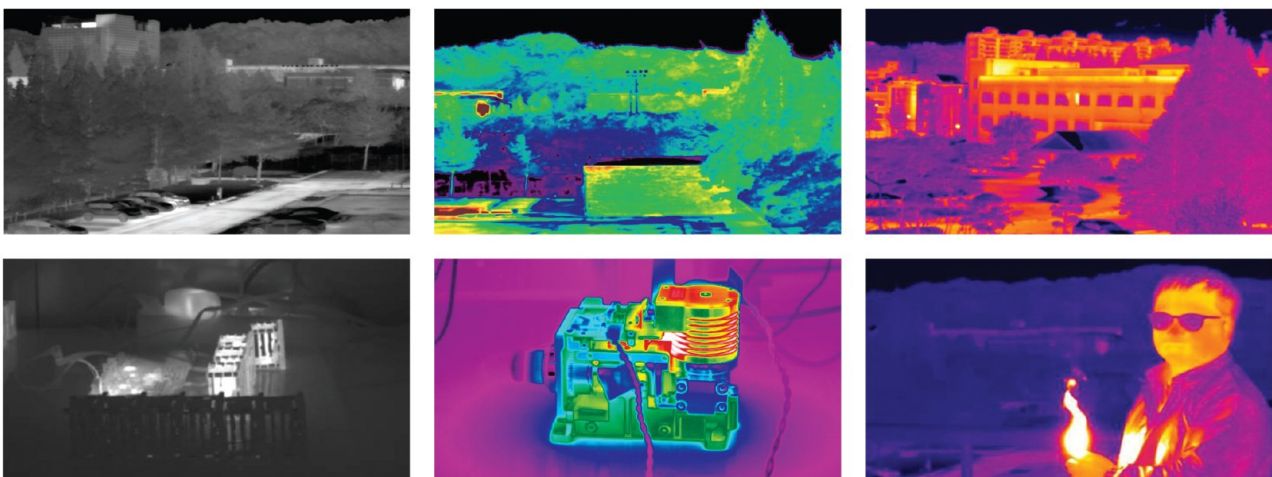
- 640x512 15 μ m Pitch
- High Operability

Applications

- Thermal Imaging System
- Infrared Military System
- Thermal Observation Device (Day and Night)
- Surveillance System



Images from the 2D IR detector



SEE THE NEW WORLD THROUGH i3system, Inc.

Specifications

Detector	
Focal Plane Array	InSb
Array format and pitch	640 x 512, 15 μ m
Thermal sensitivity(NETD)	< 20mK
Spectral range	MWIR(3~5 μ m)
Camera Engine	
Input power supply	DC 24V~28V
Power consumption (Including cooler & electronics)	< 20W@during cool down
	< 15W@after cool down
Cool down time	\leq 7min.
Max frame rate	200 Hz@640 x 512 Full Frame
Video output	Camera Link (Optional : NTSC or PAL)
Control	RS232
Dimensions (WxHxD)	57 x 79 x 139 mm
Weight	< 760g
Operating temperature	-40 ~ +71 $^{\circ}$ C

iCE640 Dimensions

